

PCP TOOLS - IMPORTANT TO/IMPORTANT FOR

Created date: 06 Sep 2016

☆☆☆☆☆

ID Number: LO30599

**LEARNING OBJECT TYPE**

Step By Step

LEVEL

Beginner

PARTNER

188

AUTHOR

Charlie Seward

LANGUAGE

English

OPERATING SYSTEM

Not Applicable

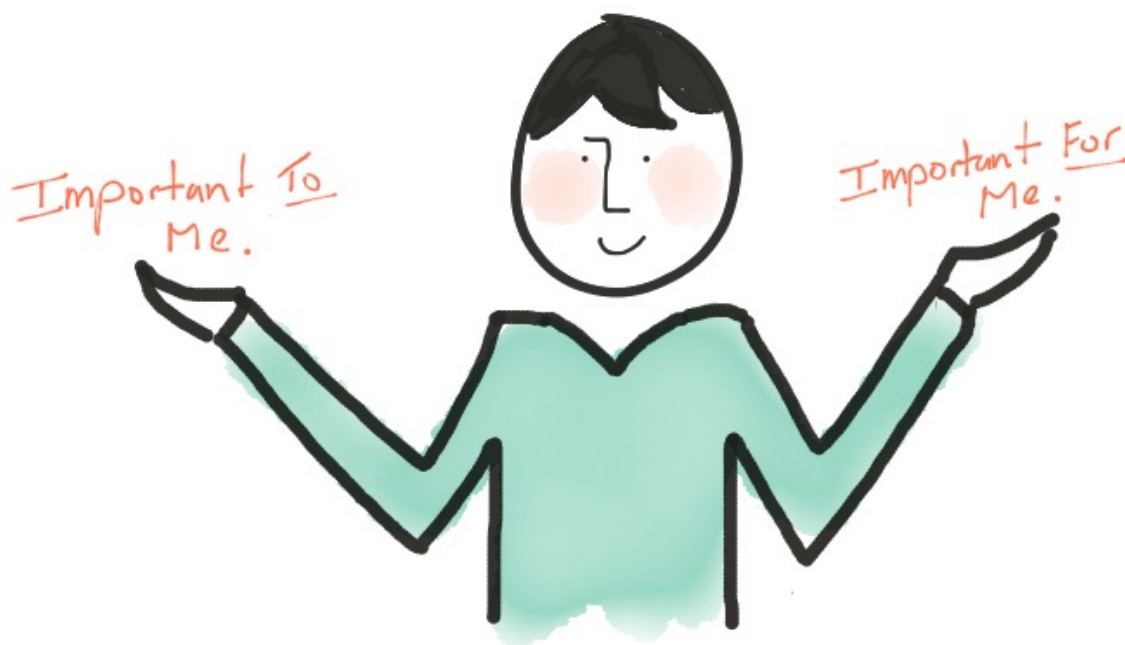
ABOUT THIS LEARNING OBJECT

The Important To/For tool is a process for sorting what is important for a person vs what is important to them. What is important for a person in an education context is that people become independent learners who are supported reach their full potential.

What is important to a person is what that person indicates with their own words and actions as what matters to them, i.e. what makes them happy, content and fulfilled, motivated, interested, engaged and in positive control of their own learning.

Using this tool will help educators to work towards a balance and adapt teaching methods and design learning spaces that are more personalised in order to meet the needs of all students.

STEP 1. HOW TO USE IT



Download the template from this page. Sit with the person and use the template to together identify both what is important to the person and what is important for the person. Some key points and considerations may arise from this and can be noted at the bottom of the template.

SUPPORT DOCUMENTS

[IncluEdu-Important-To-Template.pdf](#)